

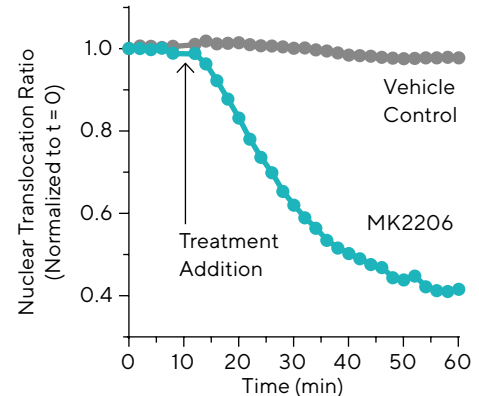
# Kinase Activity Assays

The Incucyte® Kinase Activity Assay enables users to measure and analyze dynamic changes in Akt activity in live cells in physiologically relevant environments.

- Bridge the gap between single, target-focused biochemical assays and lower-throughput cell-based follow-up experiments for the identification of novel treatments
- Enhance productivity by evaluating multiple compounds or treatments in a 96-well format, from any time point
- Gain deeper insight into treatment effects through coupling long-term evaluation of protein kinase activity with effects on cell proliferation

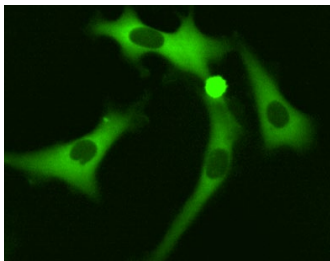
## Application Spotlight: Monitoring Kinase Akt Activity

Generate kinetic, image-based and automated measurements of kinase Akt activity using the Incucyte® Kinase Akt Green/Red Lentivirus to express a stable, genetically-encoded reporter in a variety of cell types.

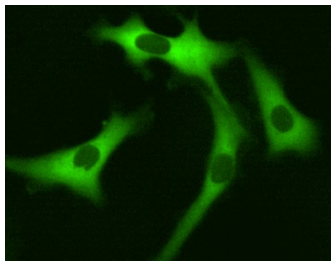


Post Akt Inhibitor Addition (3  $\mu$ M MK2206)

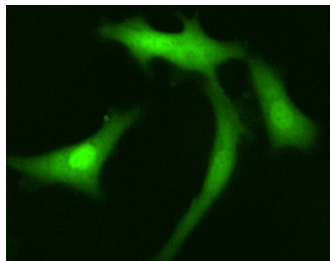
Pre-compound



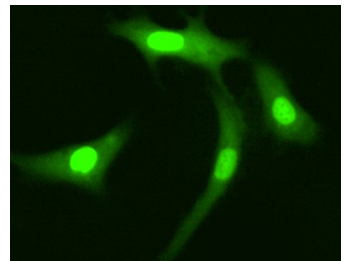
4 Minutes



16 Minutes



28 Minutes



SK-OV-3 cells stably expressing the Incucyte® Kinase Akt Green/Red indicator were treated with Akt selective inhibitor MK2206, resulting in translocation of the green fluorescent sensor from the cytoplasm to the nucleus. Time course analysis shows a decrease in the nuclear translocation ratio over time, indicating Akt inhibition.

## Ordering Information

	Product	Description	Cat. No.	Instrument Compatibility
Kinase Translocation Reporter	Fluorescently evaluate changes in kinase Akt activity using a novel genetically-encoded kinase translocation indicator			
	Incucyte® Kinase Akt Green/Red Lentivirus	One vial: 0.2 mL	BA-04868	SX5 (configured with Green/Red Optical Module), S3, SX1